



Where All Individuals Shine

WILLIAM AUSTIN INFANT SCHOOL

School Brochure

2024-2025



Welcome to William Austin Infant School...

...Where All Individuals Shine

Parent:

'I love how all teachers and staff greet the children and parents every morning and accompanying siblings too. It is so warm and receptive and for the pupils creates a safety net from the moment they walk in.'



Parent:

'Members of staff in school work hard to build up children's confidence levels. Communication with parents is wonderful. My son does not want to miss a single day. He loves going to the school. He loves his teachers.'

Chair of Governors:

'It's the children that make William Austin Infants what it is; they love coming to school, they feel safe, and they're happy!'

Pupil:

'In our school children can make new friends, learn more and stay safe.'

Parent:

'Mrs Kang always has time to speak to parents when she is out on the playground and speaks very passionately about the school, her staff and various things that are going on in the school.'

Ofsted:

'The Leadership team are deeply committed to the school and are ambitious for it.'

On behalf of the children, staff and governors, I take great pleasure in welcoming you to our school. It is an absolute privilege to be the Headteacher of such a thriving school community where high aspirations and a caring family ethos are at the very heart of everything we do. Our school motto and vision centre around 'Where All Individuals Shine'. We believe every child is unique and has the right to shine, excel and succeed.

Our school is a vibrant learning environment where children are challenged to achieve endless possibilities. Our commitment of creating a culture of excellence is contagious and is embedded across our school. Through our creative, inspiring and innovative curriculum, we capture our children's interest and individual talents to help them grow into independent, confident and successful learners. Our dedicated and ambitious staff work happily together to ignite an enthusiasm and lifelong passion for learning in every child by giving them the best education.

We firmly believe that the key to promoting successful learning for every child lies in the strong partnership we form with parents and this is important to us.

We look forward to meeting you and your child, and to having a happy association with you both.

Mrs Kang, Headteacher



Mr Boelman, Chair of Governors and Mrs Kang, Headteacher.

Our School

William Austin Infant School is a Community school.

Our school is named after the Luton historian and benefactor, William Austin. The Infant school became separated from the Junior Department in 1973.

Ofsted

In December 2018, the school had its most recent Ofsted inspection. We were judged to be a good school and we achieved a very successful and positive report. The inspector recognised many positive attributes and strengths of the school, saying that we 'have created a friendly, welcoming and happy school. Pupils behave very well in their classrooms and clearly enjoy coming to school'. They also recognised the good and outstanding teaching at our school that enables all pupils at our school to make strong progress. Ofsted endorsed the exemplary behaviour of our students that we are so proud of.

A copy of the school's Ofsted report is available to all parents. It is on the school website and can also be downloaded from the internet.

Parent:

'You take parental views into consideration, as well as community specific needs, which is very much appreciated. It allows people of different backgrounds to preserve their cultural heritage whilst integrating into British society.'

Parent:

'I am so happy with the educational standards and how my child has flourished throughout his time here.'

Communication with Parents

General and curriculum information is sent regularly to parents, via school newsletters. The school will also, on occasion, send text messages to parents and carers: for instance, if the school has to close because of snow, if a trip has a delayed return, or if a child is absent. We will only text parent/carers who have given consent on their child's admission forms.

Please visit our website to find out more information about our school as well as other key documentation and policies. For any further information or queries please contact the school office between 8.00am and 4.30pm weekdays. Please remember that if you have any worries or concerns we would rather hear about them as soon as possible, because if we do not know about them we cannot help.

Term Dates 2024–2025

Autumn Term 2024

Tuesday 3 September to Friday 20 December 2024

Half term: Monday 28 October to Friday 1 November 2024

Spring Term 2025

Tuesday 7 January to Friday 4 April 2025

Half term: Monday 17 February to Friday 21 February 2025

Summer Term 2025

Wednesday 23 April to Tuesday 22 July 2025

Half Term: Monday 26 May to Friday 30 May 2025

Training Days: 2 September 2024, 4 November 2024, 6 January 2025, 22 April 2025, 2 June 2025



Pupil:

'We have morning challenges so our brains are ready to learn. Children like learning because it is so fun!'

Parent:

'The progress my child in his learning has made since starting WAIS is fantastic. We are really impressed with the school and how they support my son and us. We are very thankful to our son's teacher and TAs for his development.'

Chair of Governors:

'William Austin Infants is a great school with an excellent staff, a caring ethos, and a superb leadership team. Well worth a closer look.'

Parent:

'Everything is done to the best standard and teachers put 100% effort in everything.'

Our Curriculum

William Austin Infant School is committed to ensuring that children develop the skills and acquire the knowledge to meet and surpass curriculum requirements. We set high expectations and standards and we are focused in our efforts to help children meet those standards.

Our motto and vision is 'Where All Individuals Shine' and we have created a culture of learning for all. We recognise and understand the needs and learning patterns of different children and we inspire them to recognise their own potential and work towards achieving it.

The Primary National Curriculum underpins our school curriculum, prompting knowledge, skills, concepts and positive learning attitudes. Since the implementation of the Primary National Curriculum we have enhanced and updated all our topic based units with new themes, resources and learning outcomes.

We have been busy making as many natural links to subjects as possible and teaching cross curricular skills. Our creative curriculum is exciting, enjoyable and engaging which provides challenging, purposeful, stimulating and unique learning opportunities for all our children.

To bring these topics to life and capture our pupils' imagination we use memorable 'Wow Moments', 'Wow Days' and 'Wow Events' which enable children to be excited, passionate and empowered to learn. In addition to this we use outdoor learning opportunities, inspirational educational visits, theatre trips, in-house theatre productions, themed dressing-up days, real life experiences, hands-on practical lessons, 'expert into school' days, as well as parental involvement with curriculum workshops and celebration days.

This approach allows us to provide our children with more meaningful, rich and exciting arrays of classroom experience, that relate, inspire and enthuse our children's imagination. We encourage children to ask questions to promote their thinking skills, and 'Talking Time' is essential. The children participate in learning through exploration, investigations, creativity, discovery and problem solving.

We offer a richly balanced, rounded curriculum to equip children with life-long learning skills. In summary our curriculum enables our children to be more active, creative, curious, imaginative, independent and reflective learners.

Please visit the curriculum tab on our website for more information about our exciting curriculum overview, curriculum in action and detailed curriculum planning and progression for each year group.

The Foundation Stage Curriculum

Compulsory education begins the term after the child's 5th birthday. Children in Year R follow a curriculum based on the Development Matters in the Early Years Foundation Stage. This allows children to work towards the Early Learning Goals in all seven curriculum areas.

The curriculum for children in Year R classes is known as The Early Years Foundation Stage Framework. This leads on to the National Curriculum that children begin in Year 1.

The curriculum is broken up into 2 main areas - Prime and Specific, and then these areas are broken up into smaller areas.

The Prime Areas are:

- Personal, Social and Emotional Development
- Communication and Language
- Physical Development

The Specific Areas are:

- Understanding the World
- Mathematics
- Expressive Arts & Design
- Literacy - Reading and Writing

At William Austin Infants, we ensure all these areas are covered through planned focussed activities, play led by the child and play guided by the adult. The learning takes place both inside and outside the classroom.

Our topics for one year are:

Autumn 1 - Elmer & Myself

Autumn 2 - Traditional Tales and Celebrations

Spring 1 - People Who Help Us

Spring 2 - Past and Present

Summer 1 - Environments and Countries

Summer 2 - Animals

On entry to school Year R children will complete the statutory baseline assessment to gather information about what they are able to do. This will be done through practical activities.



Green-fingered Year R children gardening in the raised beds.



Key Stage 1 Curriculum

The Key Stage of the National Curriculum that follows the Early Years Foundation Stage is Key Stage 1. It covers the ages of 5 to 7, in Year 1 and Year 2.

English

We have a systematic approach to the teaching of Reading, Writing, Speaking and Listening, Phonics and Handwriting. Our chosen Systematic Synthetic Phonics (SSP) program is 'Little Wandle Letters & Sounds Revised'. Phonics is taught daily right from the beginning of Year R to enable children to become competent, fluent readers and writers. Our aim in English is for children to enjoy learning so that they can achieve successfully, making excellent progress in all areas of the English curriculum.

In English, pupils learn how to speak confidently for a range of purposes. They are taught reading and writing skills and how to apply these for a range of audiences and across all areas of the curriculum. We place a great deal of emphasis on reading for enjoyment and pleasure in order to instil in children a love for books and a life-long habit for reading. We use a 'Talk for Writing' approach to enable children to internalise story language and vocabulary so that it can be transferred into their writing. Our aim is for children to become confident communicators, imaginative writers and fluent readers.

Mathematics

Our aim in Mathematics is to ensure that our children develop a deep knowledge and understanding of mathematical concepts and processes that can be applied to solving problems. We adopt a mastery approach to the teaching of mathematics which allows children to master the fundamental mathematical skills. We promote enjoyment and encourage children to feel positive and confident in their approach to Mathematics. We use resources to support learning, offer practical experiences and use the 'Concrete, Pictorial and Abstract' approach to allow children to explore more complex problem solving activities. Children are expected to explain their thinking using the correct vocabulary with an emphasis on problem solving, arithmetic and reasoning skills.

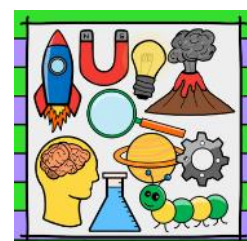
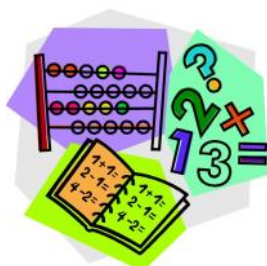
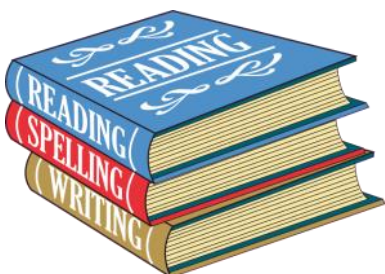
Science

In Science we strive to provide children with an exciting, stimulating, enquiry based environment with activities that motivate and engage all learners. We inspire children to achieve highly in all areas of their Science learning and begin to question the world around them.

Children are encouraged throughout the year to be curious and ask their own questions; finding ways to answer them through research, observations, data collection and investigations. We plan first hand practical experiences which are important for children to develop their Science skills.

Children are encouraged to observe, enquire and question in order to understand how and why things happen and to develop their scientific language.

We believe that Science is about developing an understanding and making sense of our world and environment through experience, exploration and interaction of our scientific based curriculum.



The Wider Curriculum

The other curriculum subjects are taught through an innovative cross-curricular thematic approach. These subjects include Computing, History, Geography, Music, Arts, Design Technology, and Physical Education.

The school follows the Luton Agreed Syllabus for Religious Education and recommended programmes of study for Personal, Social, and Health Education. We teach the statutory requirements of the Relationships and Health Education (RHE) curriculum.

More information on all the subjects taught at our school can be found on the school website. Please go to the Curriculum tab on the home page, and then click on the 'Curriculum Areas' section.

Homework

We are extremely passionate about working in partnership with parents, as we believe this gives every child the best opportunity to reach their potential.

All children are expected to complete weekly homework tasks on Google Classroom (Year 1 and Year 2), and other daily/weekly tasks below:

Year R - Reading and tricky words (Google Classroom in the Summer term)

Year 1 - Reading and Phonics/Spellings, and a Maths activity

Year 2 - Reading, Spellings, Topic-based learning task and a Maths activity

Parent:

'Lots of fun immersive activities for the children to enhance their learning e.g walk to the park when learning about plants, Kings Coronation day, dance workshop.

Important and invaluable information such as Knowledge Organisers and Medium Term planning are shared with parents so they are able to support learning at home.

Homework is well thought out and structured and reflects learning in school.'

Enrichment and Extra Curricular Activities

In addition to the National Curriculum, children are given many diverse opportunities to develop their passions and enrich their learning.

We offer a wide range of after-school clubs for children in Year 1 and 2 to participate in, including sports such as Tennis, Football, Basketball, Dance and Cricket as well as more creative subjects such as Art, Cookery and Science Club, to name a few. Our after-school sports clubs usually run for 10 weeks, and creative subjects for 5 weeks.

There are regular educational trips to the theatre, places of interest in Luton and beyond, and museums which further enhance the children's learning and understanding of the world.

Within school we focus most of our fundraising efforts on supporting local charities, such as Keech Hospice Care, Luton Foodbank and CHUMS, by hosting non-uniform days and food or cash collections. Supporting charities from a young age teaches children that they can make positive changes in the world, and they grow up with a greater appreciation of what they have. By concentrating on local charities, we are giving back to local organisations who our families may have had some personal involvement with, and can relate to within our community.



Values Education

Pupil:

'We are proud because everyone has good manners.'

Values Education promotes children's spiritual, moral, social and cultural development, as well as their attitudes to learning and behaviour.

We are proud to have been reaccredited with the Quality Mark as a Values-based School in March 2023.

VbE Quality Mark:

'William Austin Infant School is a school where all individuals shine'. Outstanding behaviour, supported by outstanding, values-based relationships enables this ethos.'

The school focuses on a different value each month. The children reflect on the value, consider what it will look like during assemblies and through their lessons, and will endeavour to display the value in their daily life at home and at school. Alongside our learning values for the year we also promote the fundamental British Values of Democracy, the Rule of Law, Individual Liberty, and Mutual Respect and Tolerance for those with different faiths and beliefs which act as the core for everything we do. These values are taught throughout the curriculum; in R.E., SEAL, PSHE, Assemblies, whole school events and links with local faith schools. **Our core School Values are: Happiness, Caring, and Respect.**

Ofsted:

'You ensure diversity is valued in your school and that pupils learn about and respect each others' beliefs.'

Towards the end of each month a child from each class who has best demonstrated the meaning of the value for that particular month is chosen to receive a special certificate in our monthly Values assembly. Staff role models are also chosen and rewarded during this assembly.

We also have a Pupil Parliament; children in Year 1 and 2 have elected 8 of their peers to become Members of our Pupil Parliament (MPPs), through the process of democratic voting. In the past our MPPs have had the opportunity to visit Luton Town Hall and meet the Mayor and Mayoress of Luton. This year they have also visited the Houses of Parliament in London where they had a tour of the Palaces of Westminster. We have also welcomed our current MP, Sarah Owen, when she came in to school to meet with and speak to the school's MPPs to talk to them about her role in Parliament.



Our amazing Mud Kitchen on the Year R playground

Year R children enjoying the outdoor space!



Pupil:

'We enjoy going to all the different school clubs.'

Parent:

'A lovely school and inspirational teachers who genuinely care for the children.'

Partnership with Parents

A close liaison between school and parents is encouraged at all times.

The class teacher is an important point of contact between home and school and it is hoped that parents will endeavour to establish a close relationship with the school, through the teacher and the Headteacher. Each class has their own email address to make contact between home and class easier, particularly for working parents who may rely on other family members bringing their child to school.

Parents are asked to sign a Home School Agreement when their child joins our school. The agreement covers the aims and expectations of both the school and parents. Children and parents are assigned a home visit prior to their child starting Foundation Stage.

'Open Evenings' are held each term when you will have the opportunity to discuss your child's work and progress with the class teacher. Children are not present at Open Evenings as this time is for parents and teachers to share information about the children. If, at any other time, there is a problem you wish to discuss with a member of school staff, please telephone or call in to make an appointment. In an emergency the Headteacher can usually see a parent immediately.

All newsletters are now sent to parents via email to inform them of school events, concerts, diary dates and special assemblies. We also email curriculum newsletters each half term with information on the topics the children will be learning about in school, and how parents can support their child at home. We also share Knowledge Organisers and 'WOW Moments' photos for each year group too. Knowledge Organisers are a summary of the key facts and vocabulary and essential knowledge that pupils need about a unit of work or a curriculum subject that will be studied during the course of each half-term, and 'WOW Moment' photos showcase the fantastic learning that takes place in class. These emails come from the 'notifications@primarysite.net' email address, as we use the website platform to send communications of this nature. All newsletters are also available to view on the school website.

Parents are invited to many school events, such as regular curriculum workshops covering English, Maths, Art, Values and Phonics, as well as Celebrations, Sports Day, assemblies, concerts and festivals. Parents can also attend 'Photo Slideshows' to see what their child has learned at school and the range of opportunities and experiences they have participated in.

Ofsted:

'The safeguarding leadership team members have an excellent understanding of their roles. Systems for reporting, recording and dealing with child protection concerns are thorough and well established.'

Parent:

'The staff are very professional and truly care about children's welfare. They were very supportive during my son's Crohn's treatment, we couldn't have done it without them. A wonderful school to attend!'

School Photographer:

'Throughout my time photographing your school, I have been consistently amazed by the warm welcome I receive from the pupils. The atmosphere created by your school's nurturing environment fosters a sense of community, respect, and empathy among the pupils, which is truly commendable.'

Our Safeguarding Commitment

Here at William Austin Infant School we firmly believe that safeguarding children is **everyone's** responsibility and that everyone who comes into contact with children and their families/carers has a role to play. We are fully committed to actively promoting a culture of vigilance where children's welfare, safety and protection are of paramount importance at all times. We ensure that our approach to safeguarding is child-centred and always consider what is in the best interest of the child.

Our school and its staff fully recognise the contribution we make in protecting children from harm as well as supporting and promoting the welfare of all the children who attend it.

All children at our school have the right to be safe and protected from harm. We promote an ethos where children feel secure, are encouraged to talk and are listened to.

Please go to the 'Key Information' section of the school website to find out more on our safeguarding commitment.

Inclusion

We have adopted a whole school inclusive approach to supporting children who have Special Educational Needs and Disabilities through close monitoring and targeted provision.

Most children with learning difficulties can progress once their difficulties have been identified and an Individual Education Plan (IEP) instituted.

Where necessary the Local Authority (LA) support services are asked to help in identifying difficulties and in the preparation of an IEP. Parents are always consulted before their child is seen by a member of the support services, and informed when their child is placed on the 'Special Educational Needs and Disabilities' register.

We aim to support children with Special Educational Needs and Disabilities within their class or Year Group as far as possible. IEPs are discussed with parents and staff who will support your child to achieve their targets. We encourage children to be involved in setting their targets and reviewing their progress.

The school's SEND policy and SEND Information Report is on the school website.

Promoting Positive Behaviour

We believe that all pupils have the right to learn in a calm and orderly atmosphere. We intend to develop positive attitudes and behaviour in our pupils so that they learn respect for themselves, others and their surroundings. We encourage well-mannered and courteous behaviour at all times. We aim to create an environment where everyone feels happy, safe and secure.

The 'Golden Rules' are displayed around the school to promote positive behaviour

- We always follow our school Values*
- We listen to everyone*
- We look after our property*
- We are gentle and kind*
- We use our good manners*
- We always try our best*

We use a reward system that recognises and celebrates positive behaviour.

Rewards and sanctions are explained in detail in the school's Behaviour Policy.

The Three Bears enjoying Story Corner on the Year R playground!



Leave of Absence for non-medical reasons

Parents are reminded that children should attend school every day unless they are ill. Headteachers will not grant any leave of absence during term time unless there are exceptional circumstances. Exceptional circumstances refers to a situation that requires immediate attention and travel such as critical illness or death of a family member, and the school may ask for documentation.

Where possible, parents are required to come into the school office to discuss any Leave of Absence requests prior to booking any flights, and complete a Leave of Absence form and provide flight booking details before they travel. In cases where parents do not comply with these regulations the child may lose their place at school and, if we are over-subscribed, it may not be possible for the child to be re-admitted. Penalty notices and fines will be issued by the Local Authority's Attendance Support Team.

Parents are welcome to request a copy of the Leave of Absence Policy from the school office or download it from the school's website. Please also refer to our Attendance Policy on the school website.

We actively discourage late arrival to school. The school works closely with the Attendance Support Team to monitor lateness and absence. We make a point of contacting parents if there are any concerns as we have a duty of care to our students and their well-being.

Absence for Medical Reasons

When your child is absent from school please let us know the reason for the absence, on the first day if possible, as we have to record it in the class register.

In order to prevent further infection, in cases of sickness and diarrhoea your child should stay at home for 48 hours after the infection has cleared. Should your child be diagnosed as having German Measles, Scarlet Fever or chickenpox please let us know immediately.

A child who has to leave school to attend an appointment should be collected from school by a parent or legal guardian. No child can be released to anyone else without written permission from the parent or guardian.

Illness or Accident at School

In case of illness or accident at school it is sometimes necessary to make immediate contact with a parent. We ask parents to fill in a form giving us a telephone point of contact. If subsequently there is a change of telephone number it is important that you let us know as soon as possible.

Medicine

We ask you to fill in an indemnity form for the administration of medicines. Only medicines prescribed by a doctor and with a dosage of four times a day or more can be given by school staff and a Medicine Record Sheet will need to be completed.

Medical Conditions

If your child suffers from asthma, or has any other conditions or allergies that may need treatment in school then please let us know, and provide school with the correct medication, so that we can give the appropriate care when needed. The school also holds emergency inhalers and Adrenaline Auto Injectors which can be used in the event of a child's prescribed medication running out, having expired or failing to work. The parent will be asked to give written consent for this medication to be used in the event of such an emergency taking place.

School Uniform

At William Austin Infant School all children are expected to wear school uniform with pride. We believe wearing a school uniform, with our school logo, helps our children to have a sense of belonging to our 'school community'. The school uniform was agreed by governors taking into consideration health and safety, religious and cultural needs, fairness and equality. It also helps us to easily identify our children during educational visits and supports our safeguarding procedures.

Our uniform is designed to be practical and suitable for the age of the children, and to ensure equality with regard to school clothing.

School Uniform should be selected from the following items:

- ◆ Dark grey or black trousers, dark grey or black skirt or pinafore dress, shalwar (dark grey or black) Kameez (white)
- ◆ Purple school sweatshirt or cardigan, embroidered with the school logo
- ◆ White shirt, blouse or polo shirt
- ◆ Dark, black or white coloured socks, plain dark grey or black tights
- ◆ Plain black shoes with easy fastenings, e.g. Velcro (no boots or trainers.) A visual guide to appropriate school footwear can be found on our website
- ◆ Children in Year R need a pair of wellington boots in school for outdoor work
- ◆ Hijabs should be a ready-made elasticated style, and should be plain black, dark grey or white, and no longer than shoulder length
- ◆ Turbans, skull-caps or topis should, where appropriate be either black or grey

During the Summer term children may wear:

- ◆ Purple or lilac and white check dress
- ◆ Dark grey or black shorts

P.E Kit

- ◆ Black Plimsolls
- ◆ Plain white t-shirt
- ◆ Black shorts, tracksuit bottoms (with elasticated ankles) or leggings

Children should come into school wearing their PE clothes on the day they do PE.

All children must have a purple school book bag. These are available to buy from the school office.

PLEASE NAME ALL ITEMS OF SCHOOL CLOTHING.

Pupil Premium

Pupil Premium is funding received from the Government in addition to our main school funding. It is provided to help schools close the attainment gap between children from disadvantaged families and their peers.

Pupil Premium Funding is provided to enable eligible pupils to be supported to ensure they reach their full potential.

If you are in receipt of certain benefits, such as Income Support, Universal Credit, Child Tax Credit, Income Related Jobseekers Allowance, and have successfully registered your child as being eligible for Pupil Premium, you may be entitled to some help toward the cost of school uniform, school milk, after school clubs educational trips. Please ask at the school office for more information, or follow the links on our website to apply online.

School Meals

All children in Reception, Year 1 and Year 2 are entitled to a free hot meal in school every day under the Universal Free School Meals Scheme. Our school meal provision is supplied by abm Caterers, who use fresh, seasonal produce, prepared and cooked on-site by an experienced and well-trained team.

The lunchtime menu is displayed on Parent Notice Boards, and is available on the school website. The menu is as varied as possible, giving a choice of foods including vegetarian meals. All meat served by the kitchen is Halal, and our supplier is certified by the HMC. A drink of water is provided with the school meal. It is not possible for children having a dinner provided by school to bring their own drinks.

If you would prefer to provide your child with a packed lunch it must be in a lunchbox, clearly marked with the child's name and class. Please make sure the lunch includes a drink which must be in a water-tight container; fizzy drinks, chocolates and sweets are not allowed. The school promote healthy eating, and we ask that you provide a healthy, balanced packed lunch for your child.

Except in an emergency, it is not possible for children to have a school dinner one or two days of the week and a packed lunch for the remainder, or vice versa. Should you wish to change your child's meal arrangements there must be at least one week's notice given.

We are a nut-free school, and the school kitchen does not serve any foods that may have nuts present. Children having packed lunches from home are requested not to have anything in their lunchbox that may contain nuts, including hidden nuts, such as Nutella Spread et.c. Written medical evidence is required by the kitchen for any food allergies your child may suffer from.

Our kitchen manager is always happy to speak to parents regarding any concerns. You can contact her on 07704 146834.

Each class of children has a Mid-Day Supervisor who cares for them, helps them collect their meal and encourages them to eat their food. Children are not forced to eat their food, but if they consistently eat very little, this will be reported to the parent. All children with packed lunches bring home what they don't eat so that parents can keep a check on their food intake.

Mid-Morning Milk, Free Fruit and Water Bottles

Children under the age of 5 get a free carton of milk every day in school up until their 5th birthday. If you would like your child to continue to have milk after their 5th birthday, payment will be required at the start of the term that they turn 5. A letter will be sent home at the start of each term, stating the amount to be paid for that term.

We are part of the Department of Health 'Free Fruit Scheme' which provides a different piece of fruit or vegetable for each child every day. Please let us know if your child has any allergies. It is not possible for children to bring in alternative snacks or fruit from home to have at breaktime.

We encourage children to bring water bottles to school every day. Bottles should have a sports-style lid, and be clearly marked with the child's name and class. It should be filled with plain water only. Suitable bottles can be bought from the school office for £1.50.



School's 50th Birthday!

On 14 February 1974, our school was officially opened after separating from William Austin Junior School in September 1973.

To celebrate our 50th birthday, we had a fun-filled day of 1970s themed activities on 14 February this year! We dressed up in our groovy clothes and had a special assembly where we invited former pupils and members of staff to attend. The children decorated fairy cakes, which they took home to enjoy, and they had a party in the hall, playing 'Pass the Parcel', and other party games! They showed off their dancing skills, singing along to our birthday's signature tune 'Tiger Feet' by Mud!! This was number one in the charts when the school opened, and we all had great fun learning the dance steps that accompany the song!!

We also celebrated the opening of our new wellbeing room, 'The Happy Place', which was officially opened by the grandchildren of the gentleman who opened our school all those years ago!! Looking after our children's mental health is greatly important to us as a school, and The Happy Place is a calm and tranquil space for all the children to use, a place where they can go to relax, de-stress and feel comfortable to express themselves if they are worried or upset.



Achievement Awards

We are extremely proud of all our prestigious awards!



INVESTORS
IN PEOPLE



Artsmark
Silver Award
Awarded by Arts
Council England

**WILLIAM AUSTIN INFANT SCHOOL
CULVERHOUSE ROAD
LUTON
BEDFORDSHIRE
LU3 1PZ**

Headteacher: Mrs. B. Kang B.Ed (Hons)

Chair of Governors: Mr. S. Boelman

Telephone: 01582 595198

Email: office@williamaustininfants.co.uk

Website: www.williamaustininfants.co.uk

